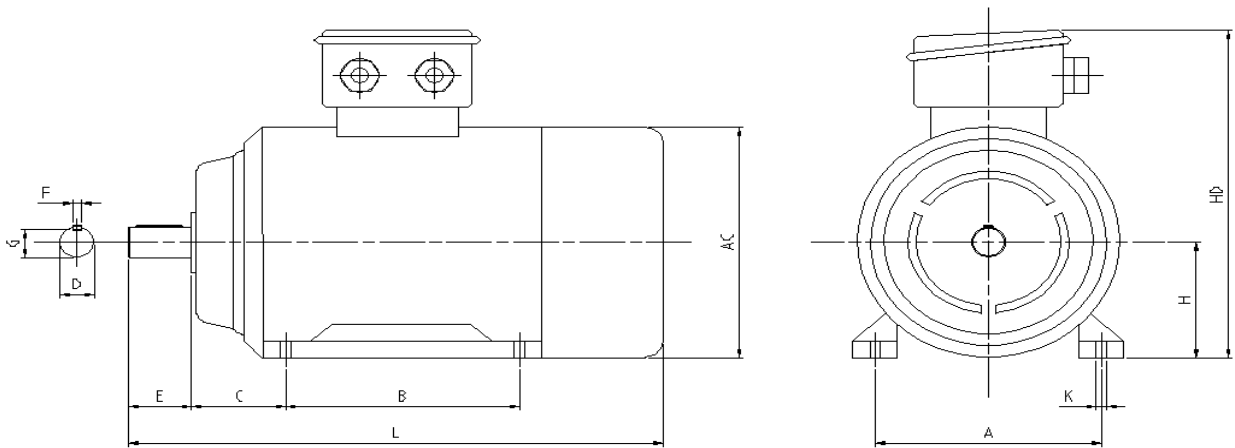


AC 3-Phase Electrical Squirrel Cage Motors -- YE2 SERIES

FORNITORE FOURNISSEUR SUPPLIER	E.M.C.	GRANDEZZA & TIPO TAILLE & TYPE SIZE & TYPE	YE2-160L2	EFFICIENZA EFFICENCY EFFICACITÉ	IE 2
POTENZA NOMINALE PUISSANCE NOMINALE NOMINAL POWER	18,5 21,0 kW	POTENZA NOMINALE PUISSANCE NOMINALE NOMINAL POWER	25 27,7 Hp	VELOCITA' VITESSE SPEED	2940 3528 Rpm
TENSIONE TENSION RATED VOLTAGE	400/690 440/760 V	FREQUENZA FREQUENCE FREQUENCY	50/60 Hz	CARCASSE BODY CARCASSE	CAST IRON
CORRENTE NOMINALE COURANT NOMINAL RATED CURRENT	33/19,1 33/19,1 A	COPPIA NOMINALE COUPLE NOMINAL RATED TORQUE	60,09 Nm	PESO POIDS WEIGHT	134 kG
SOVRATEMPERATURA ECHAUFFEMENT TEMPERAURE RISE	B	CLASSE ISOLAMENTO CLASSE ISOLATION INSULATION CLASS	F	TEMP. AMBIENTE TEMP. AMBIANCE AMBIENT TEMP.	40 °C
Ma / Mn Md / Mn Ms / Mn	2,2	Mmax / Mn Mmax / Mn Mmax / Mn	2,3	la / ln ld / ln ls / ln	8,1
FATTORE DI POTENZA FACTEUR de PUISSANCE POWER FACTOR	0,9	RENDIMENTO RENDEMENT EFFICIENCY	92,1 %	SERVIZIO SERVICE SERVICE	S 1
FORMA COSTRUTTIVA FORME MOUNTING POSITION	B 3	PROTEZIONE IP PROTECTION IP ENCLOSURE IP	55	TROPICALIZZATO TROPICAL TROPICALISE'	YES
CAPPELLO PARAPIOGGIA DARIN COVER PARA - PLUIE	NO	SCARICO CONDENSA DRAIN HOLE TROU DE POURGE	NO	VERNICIATURA PAINTING PEINTURE	Ral 5010 Blue
TIPO CUSCINETTO TYPE de ROULEMENT BEARINGS TYPE	→	Lato Comando Cote Accouplement Drive End Side	6309 C3	Lato Opposto Cote Opposée Non Drive End Side	6309 C3
LUBRIFICAZ. GRASSO LUBRIFICATION GRAISSE LUBRIFICATION GREASE	LGHP - SKF	ORE HEURES HOURS	1500	RESIST.ANTICONDENSA RESIST.de RECHAUFFAGE SPACE HEATERS	-- V -- W
PROTEZIONE TERMICA PROTECTION THERMIQUE THERMAL PROTECTION	3 x PTC	CUSCINETTO ISOLATO INSOLATED BEARING ROULEMENT ISOLEE	NO	VENTILAZIONE ASSISTITA VENTILATION FORCEE' FORCES VENTIALTION	-- kW -- V -- A
SENSO DI ROTAZIONE DIRECTION OF ROTATION SENSE DE ROTATION	CW / CCW	ENCODER ENCODER CODEUR	NO	NORME NORMES STANDARD	IEC & CE



MOTOR DIMENSION - FRAME SIZE H								160
D	E	F	G	C	A	B	AC	L
42	110	12	45	108	254	254	325	670
N	P	M	LA	T	S	K	AD	HD
--	--	--	--	--	--	15	--	452

NOTE

1)	--
2)	--
3)	--

EMC ITALY reserves the right to change the data in order to improve its product without prior notice. Version updated August 2015